

## WARRANTY

Concrete Surfaces

For installed products and shipped products

---

Your concrete surface is guaranteed to be suitable for any normal purpose for which it is intended and without defects in workmanship, provided it has been installed and maintained according to Anthony Concrete Design instructions.

### ONE-YEAR STRUCTURAL WARRANTY

During the first year after installation, Anthony Concrete Design, as its sole option, shall repair or replace the product if it fails to maintain functional integrity for the intended purpose of the product solely due to a fabrication defect. This applies only to Anthony Concrete Design products that have been handled, fabricated, installed and maintained in the manner recommended by Anthony Concrete Design.

While our products are designed to last a lifetime, their appearance may change over time due to the natural aging process of concrete and normal wear and tear. Specifically, the following items are NOT covered under warranty:

- Slight irregularities in the colour or texture of the concrete
- Colour and surface texture changes due to exposure to foreign elements.
- Surface stains, scratches, and chips.
- Hairline cracks as these will not affect the structural integrity of the product.
- Naturally occurring bug holes appearing on the surface.
- Failure of any supporting members (i.e. cabinetry, wall supports).
- Issues due to misuse, negligence, or failure to follow given care instructions.
- Damage resulting from attempts to modify the concrete surface.
- Damage caused by drilling into or attempting to alter the product from the way in which it was received.

The following characteristics are considered acceptable as usual product features of concrete and do not qualify as defects:

- Natural colour tone deviations, shapes, shadows, flows, surface grains, colour tonality, surface hairline cracks and surface texture.
- Phenomena, such as inhomogeneity of colour or surface originating from the naturalness of the material.
- Natural colour differences within the same concrete panel, between two panels, or between panels manufactured at different times.

Concrete is an artisanal material that is crafted by hand. Our handcrafted concrete pieces are unique and have distinct features, variations, and characteristics. Although each element is fabricated precisely, no two parts are identical.

Efflorescence, surface heterogeneity, porosity, hairline cracks, and mould markings are integral parts of the material, differentiating it from industrial, mass-produced and synthetic products. The effects and patina that concrete products acquire with age and use are in no way manufacturing defects.

Hairline cracks may develop during curing as concrete undergoes expansion and shrinkage phases. These microcracks are superficial, sometimes visible, generally non-absorbent, and barely noticeable to the touch.

Colour shades may vary between the selected samples and the end result. Hues within the same project may also vary from one piece to another.

# WARRANTY

Concrete Surfaces

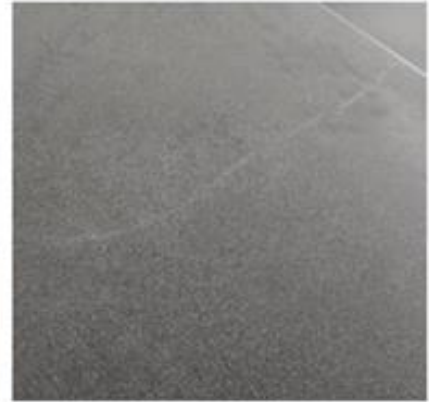
For installed products and shipped products



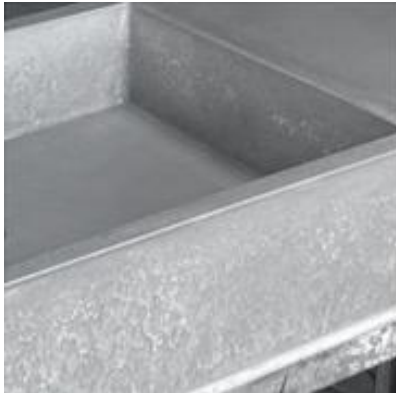
Mould Markings



Porosity on Edge



Hairline Crack



Mould Markings



Surface Irregularities



Mould Markings

While you may have chosen finishes from the photos, documentation, or samples provided, be aware that these tools cannot represent the full spectrum of potential effects the piece may have once completed. Concrete is a complex material that produces unexpected yet desirable effects, which make it look and feel authentic. If you have any doubts or concerns, please feel free to contact us, and we will be happy to answer your questions.

Anthony Concrete Design shall have the sole and final right to determine whether a warranty claim is valid. Warranty claims are valid in writing and shall be submitted with the following content:

1. Name, address, telephone number of purchaser, installation address.
2. Specification of the products, date and location of receipt of products, copy of invoices; and
3. Specification of the defect (photos are necessary)

Anthony Concrete Design shall not be liable under this warranty where the concrete surface has been used for abnormal purposes, improperly installed, or has damage resulting from abuse. Anthony Concrete Design shall not be liable for any inconvenience or expense for material or labour related to the removal, replacement, or refinishing of the defective surface or for any loss or damage to any person or property whatsoever resulting from the defective concrete surface.

The provisions of this warranty are not transferable and are not in addition to or in modification of or subtractions from any applicable statutory warranties, rights or remedies.